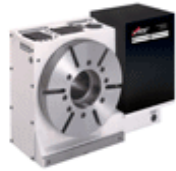




ATS Systems

Completing Machine Tool Investments



KITAGAWA B200 & BT200 Series Chucks



SPECIFICATIONS

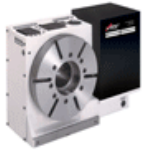
MODEL	UNIT	B204	B205	B206A05	B208A06	B210A06	B210A08	B212A06	B212A08	BT204	BT205	BT206A0	BT208A0	BT210A0	BT210A0	BT212A0	BT212A0
Spindle Nose		Ø3.346	Ø4.331	A2-5	A2-6	A2-6	A2-8	A2-6	A2-8	Ø3.346	Ø4.331	A2-5	A2-6	A2-6	A2-8	A2-6	A2-8
Thru-Hole	in.	1.024	1.299	1.772	2.047	2.953	2.953	3.583	3.583	1.024	1.299	1.772	2.047	2.953	2.953	3.583	3.583
Jaw Stroke (Diameter)	in.	0.213	0.213	0.217	0.29	0.346	0.346	0.417	0.417	0.213	0.213	0.217	0.291	0.346	0.346	0.417	0.417
Plunger Stroke	in.	0.394	0.394	0.472	0.63	0.748	0.748	0.906	0.906	0.394	0.394	0.472	0.63	0.748	0.748	0.906	0.906
Max. Draw Bar Pull Force	kN (kgf)	14 (1428)	17.5 (1784)	22 (2243)	34.8 (3549)	43 (4385)	43 (4385)	55 (5608)	55 (5608)	9.3 (948)	11.7 (1193)	14.5 (1479)	23.2 (2366)	28.5 (2906)	28.5 (2906)	36.7 (3742)	36.7 (3742)
Max. Gripping Force	kN (kgf)	28.5 (2906)	36 (3671)	57 (5812)	86 (8769)	111 (11319)	111 (11319)	144 (14686)	144 (14686)	19 (1937)	24 (2447)	38 (3875)	57.3 (5843)	74 (7546)	74 (7546)	96 (9789)	96 (9789)
Max. Speed	rpm	8000	7000	6000	5000	4200	4200	3300	3300	8000	7000	6000	4800	4200	4200	3300	3300
Net Weight	lbs.	8.8	15	27	49	81	75	123	117	8.4	14.3	27	45	76	70	112	106
GD ²	kg.m ²	0.007	0.018	0.063	0.178	0.325	0.323	0.78	0.765	0.006	0.017						
Matching Cylinder		F0933H	F0933H	S1246	S1552	S1875	S1875	S2091	S2091	F0933H	F0933H	S1246	S1552	S1875	S1875	S2091	S2091
Matching Soft Top Jaw		SB04N1	SB05N1	SB06B1	SB08B1	SB10B1	SB10B1	SB12N1	SB12N1	SB05N1	SB05N1	SB06B1	SB08B1	SB10B1	SB10B1	SB12N1	SB12N1
Matching Hard Top Jaw		HB04N1	HB05N1	HB06B1	HB08A1	HB10A1	HB10A1	HB12N1	HB12N1	HB05N1	HB05N1	HB06B1	HB08A1	HB10A1	HB10A1	HB12N1	HB12N1

Buy online www.ats-s.com or call 800-321-1833 or outside the USA 01-949-888-1744

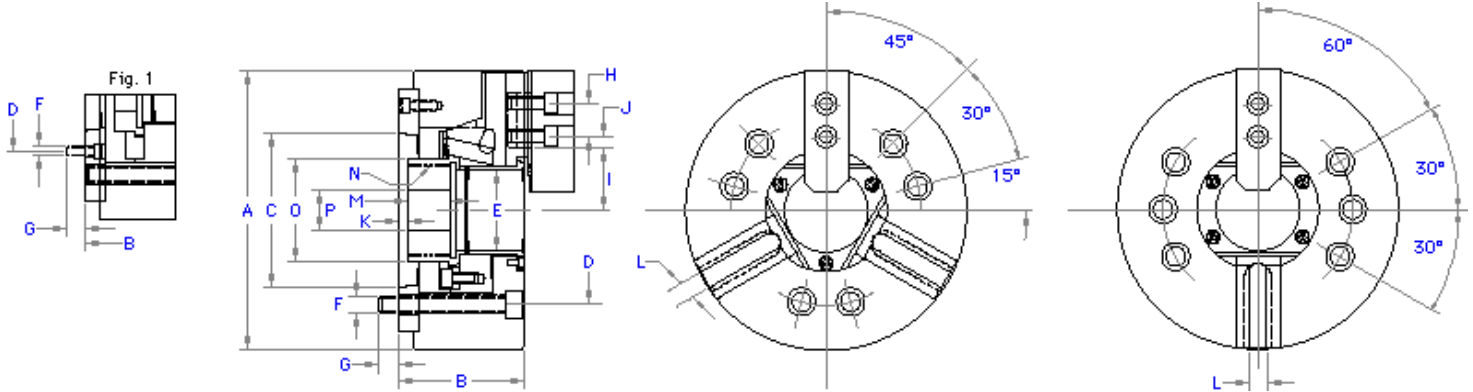


ATS Systems

Completing Machine Tool Investments



KITAGAWA B200 & BT200 Series Chucks



DIMENSIONS (Dimensions in Inches)

MODEL	B206A05	B208A06	B210A06	B210A08	B212A06	B212A08
	BT206A05	BT208A06	BT210A06	BT210A08	BT212A06	BT212A08
A	6.654	8.268	10	10	11.969	11.969
B	3.583	4.055	4.724	4.449	5.079	4.803
C	3.25	4.188	4.188	5.501	4.188	5.501
D	4.125	5.25	5.25	6.75	5.25	6.75
E	1.772	2.047	2.953	2.953	3.583	3.583
F	6xM10	6xM12	6xM12	6xM16	6xM12	6xM16
G	0.63	0.709	0.728	0.945	0.728	0.984
H	0.787	0.984	1.181	1.181	1.181	1.181
I max.	1.26	1.524	2.008	2.008	2.413	2.413
I min.	1.152	1.378	1.835	1.835	2.205	2.205
J max.	0.896	1.171	1.329	1.329	1.803	1.803
J min.	0.364	0.581	0.561	0.561	0.621	0.621
K max.	1.024	1.24	1.319	1.043	1.299	1.024
K min.	0.551	0.61	0.571	0.295	0.394	0.118
L	0.472	0.551	0.63	0.63	0.827	0.827
M	0.591	0.65	0.787	0.787	0.906	0.906
N max.	M55x2.0	M60x2.0	M85x2.0	M85x2.0	M100x2.0	M100x2.0
O	2.362	2.598	3.701	3.701	4.252	4.252
P	0.787	1.181	1.772	1.772	1.969	1.969

B210A06, B212A06, BT210A06 and BT212A06 are referred to in Fig. 1. Draw nut is supplied without thread.

Buy online www.ats-s.com or call 800-321-1833 or outside the USA 01-949-888-1744